

Client name: Asociación AMALA.

Type of sample: vegetable

Date of delivery: 21-12-2017

Humidity:

Sample: Bilbo x White Widow

Comments:

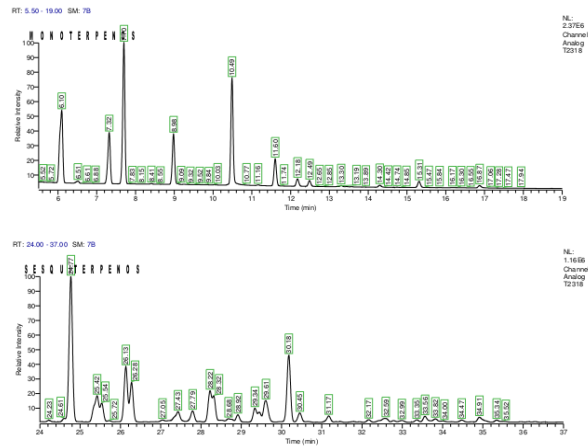
Date of analysis: 08-01-2018

N.I laboratory: M17-T2318

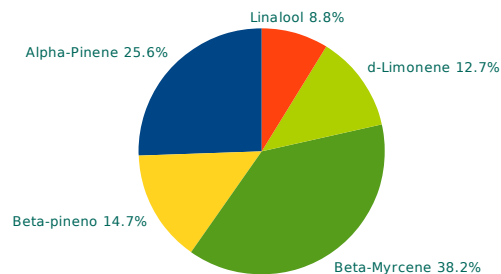
MONOTERPENES

Alpha-Pinene	0.264%
Camphene	N.D.
(-)-beta-Pinene	0.152%
Beta-Myrcene	0.395%
delta-3-Carene	N.D.
Alpha-Terpinene	N.D.
p-Cymene	N.D.
d-Limonene	0.131%
Eucaliptol	--
Cis-Ocimene	N.D.
Gamma-Terpinene	N.D.
Trans-Ocimene	N.D.
Terpinolene	N.D.
Linalool	0.091%
(-)-Isopulegol	N.D.
Geraniol	N.D.

CHROMATOGRAM



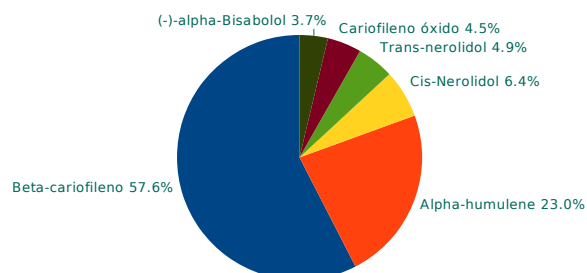
MONOTERPENES RELATIVE RATIO



SESQUITERPENES

Beta-caryophyllene	0.308%
Alpha-humulene	0.123%
Cis-Nerolidol	0.034%
Trans-nerolidol	0.026%
Caryophyllene oxide	0.024%
(-)-Guaiol	N.D.
(-)-alpha-Bisabolol	0.020%

SESQUITERPENES RELATIVE RATIO



N.D.=<0.02%