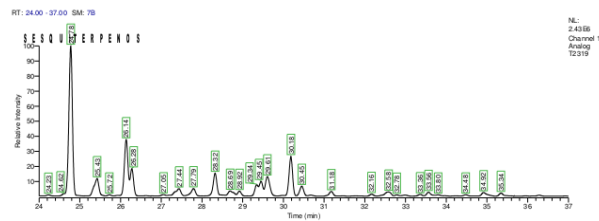
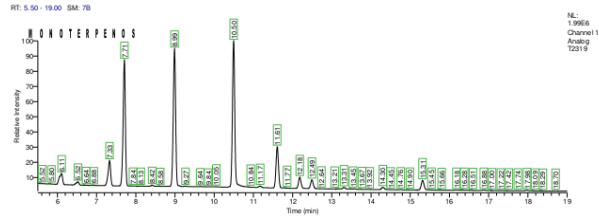


<b>Client name:</b> Asociación AMALA.	<b>Type of sample:</b> vegetable
<b>Date of delivery:</b> 21-12-2017	<b>Humidity:</b>
<b>Sample:</b> Critical Amable x White Widow	<b>Comments:</b>
<b>Date of analysis:</b> 08-01-2018	<b>N.I laboratory:</b> M17-T2319

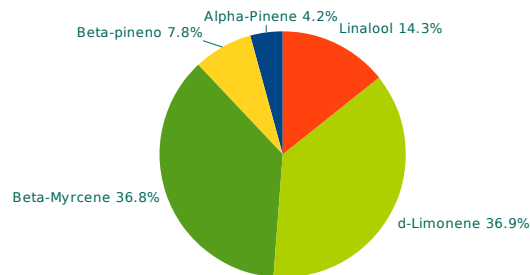
### MONOTERPENES

Alpha-Pinene	0.030%
Camphene	N.D.
(-)-beta-Pinene	0.055%
Beta-Myrcene	0.260%
delta-3-Carene	N.D.
Alpha-Terpinene	N.D.
p-Cymene	N.D.
d-Limonene	0.261%
Eucaliptol	--
Cis-Ocimene	N.D.
Gamma-Terpinene	N.D.
Trans-Ocimene	N.D.
Terpinolene	N.D.
Linalool	0.101%
(-)-Isopulegol	N.D.
Geraniol	N.D.

### CHROMATOGRAM



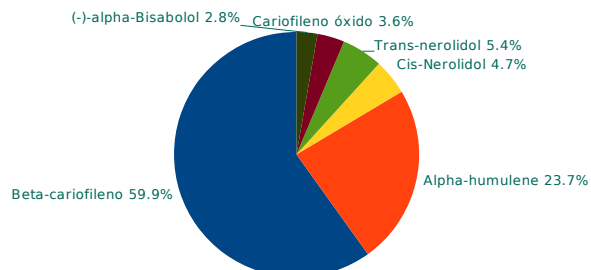
### MONOTERPENES RELATIVE RATIO



### SESQUITERPENES

Beta-caryophyllene	0.587%
Alpha-humulene	0.232%
Cis-Nerolidol	0.046%
Trans-nerolidol	0.053%
Caryophyllene oxide	0.035%
(-)-Guaïol	N.D.
(-)-alpha-Bisabolol	0.027%

### SESQUITERPENES RELATIVE RATIO



N.D.=<0.02%