

Client name: Asociación por el Movimiento Alegre por la Legalización y la Antiprohibición (amala)

Type of sample: Vegetal

Date of delivery: 28-05-2018

Humidity:

Sample: Moby Dick Selección

Comments:

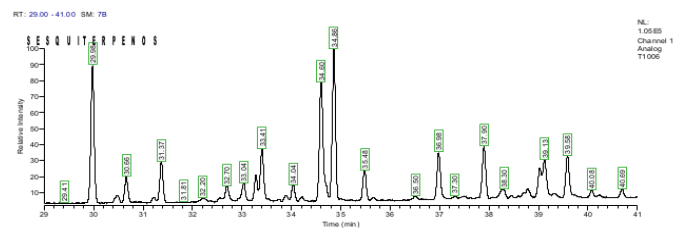
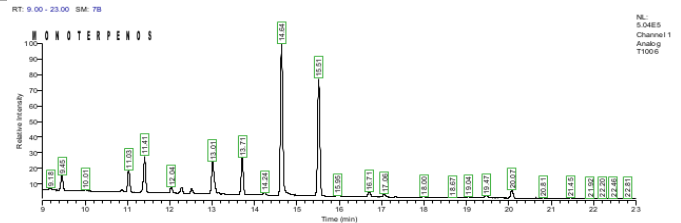
Date of analysis: 16-05-2018

N.I laboratory: M18-T1006

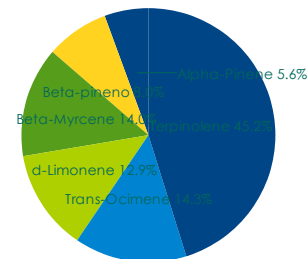
MONOTERPENES

Alpha-Pinene	0.059%
Camphene	N.D.
(-)-beta-Pinene	0.085%
Beta-Myrcene	0.148%
delta-3-Carene	N.D.
Alpha-Terpinene	N.D.
p-Cymene	N.D.
d-Limonene	0.136%
Eucaliptol	--
Cis-Ocimene	N.D.
Gamma-Terpinene	N.D.
Trans-Ocimene	0.151%
Terpinolene	0.477%
Linalool	N.D.
(-)-Isopulegol	N.D.
Geraniol	N.D.

CHROMATOGRAM



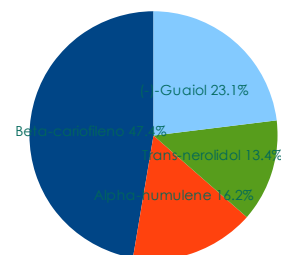
MONOTERPENES RELATIVE RATIO



SESQUITERPENES

Beta-caryophyllene	0.152%
Alpha-humulene	0.052%
Cis-Nerolidol	N.D.
Trans-nerolidol	0.043%
Caryophyllene oxide	N.D.
(-)-Guaiol	0.074%
(-)-alpha-Bisabolol	N.D.

SESQUITERPENES RELATIVE RATIO



N.D.=<0.04%