

Client name: Asociación AMALA.

Type of sample: vegetable

Date of delivery: 21-12-2017

Humidity:

Sample: Amable

Comments:

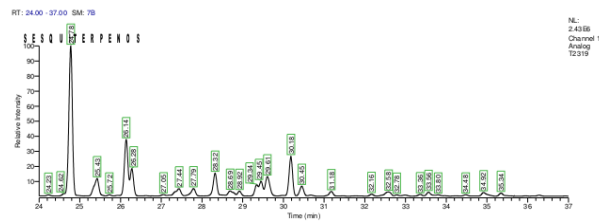
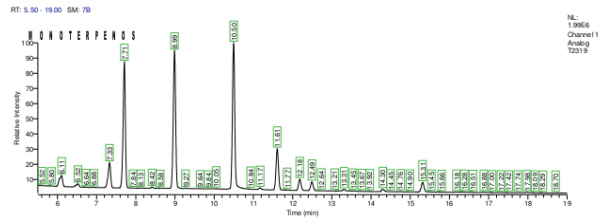
Date of analysis: 08-01-2018

N.I laboratory: M17-T2319

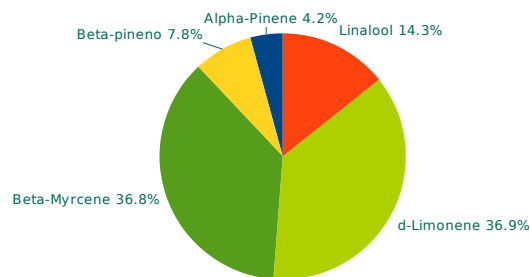
MONOTERPENES

Alpha-Pinene	0.030%
Camphene	N.D.
(-)-beta-Pinene	0.055%
Beta-Myrcene	0.260%
delta-3-Carene	N.D.
Alpha-Terpinene	N.D.
p-Cymene	N.D.
d-Limonene	0.261%
Eucaliptol	--
Cis-Ocimene	N.D.
Gamma-Terpinene	N.D.
Trans-Ocimene	N.D.
Terpinolene	N.D.
Linalool	0.101%
(-)-Isopulegol	N.D.
Geraniol	N.D.

CHROMATOGRAM



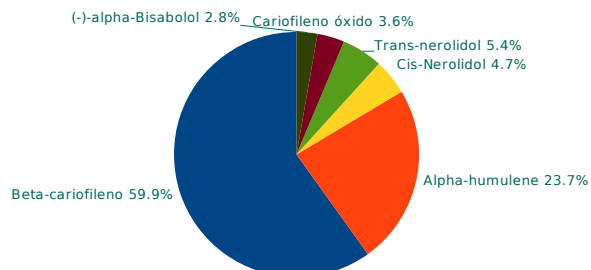
MONOTERPENES RELATIVE RATIO



SESQUITERPENES

Beta-caryophyllene	0.587%
Alpha-humulene	0.232%
Cis-Nerolidol	0.046%
Trans-nerolidol	0.053%
Caryophyllene oxide	0.035%
(-)-Guaiol	N.D.
(-)-alpha-Bisabolol	0.027%

SESQUITERPENES RELATIVE RATIO



N.D.=<0.02%